

# CITY OF KELOWNA

## BYLAW NO. 10328

### Road Closure and Removal of Highway Dedication Bylaw (Portion of Chute Lake Road)

**A bylaw pursuant to Section 40 of the Community Charter to authorize the City to permanently close and remove the highway dedication of a portion of highway on Chute Lake Road**

---

NOW THEREFORE, the Municipal Council of the City of Kelowna, in open meeting assembled, hereby enacts as follows:

1. Those portions of highway attached as Schedule "A" comprising of 287.3 m<sup>2</sup> shown in bold black as Closed Road parcel A and comprising of 699.4 m<sup>2</sup> shown in bold black as Closed Road parcel B on the Reference Plan prepared by Douglas A. Goddard, B.C.L.S. and completed on 22<sup>nd</sup> day of April, 2010, is hereby stopped up and closed to traffic and the highway dedication removed.
2. The Mayor and City Clerk of the City of Kelowna are hereby authorized to execute such conveyances, titles, survey plans, forms and other documents on behalf of the said City as may be necessary for the purposes aforesaid and to affix the Corporate Seal of the said City thereto.

Read a first, second and third time by the Municipal Council this 3<sup>rd</sup> day of May, 2010.

Adopted by the Municipal Council of the City of Kelowna this

---

Mayor

---

City Clerk

Schedule "A"

**REFERENCE PLAN TO ACCOMPANY CITY OF KELOWNA ROAD CLOSURE AND REMOVAL OF HIGHWAY DEDICATION BY-LAW #10328 OF PARTS OF CHUTE LAKE ROAD SHOWN DEDICATED ON PLANS M18136, H18265, M18084 and 27534 SEC. 25 TP. 28 S.D.Y.D.**

**PLAN KAP \_\_\_\_\_**

Deposited in the Land Title Office at Kamloops, B.C. this day of \_\_\_\_\_, 20\_\_

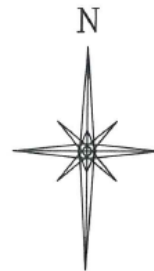
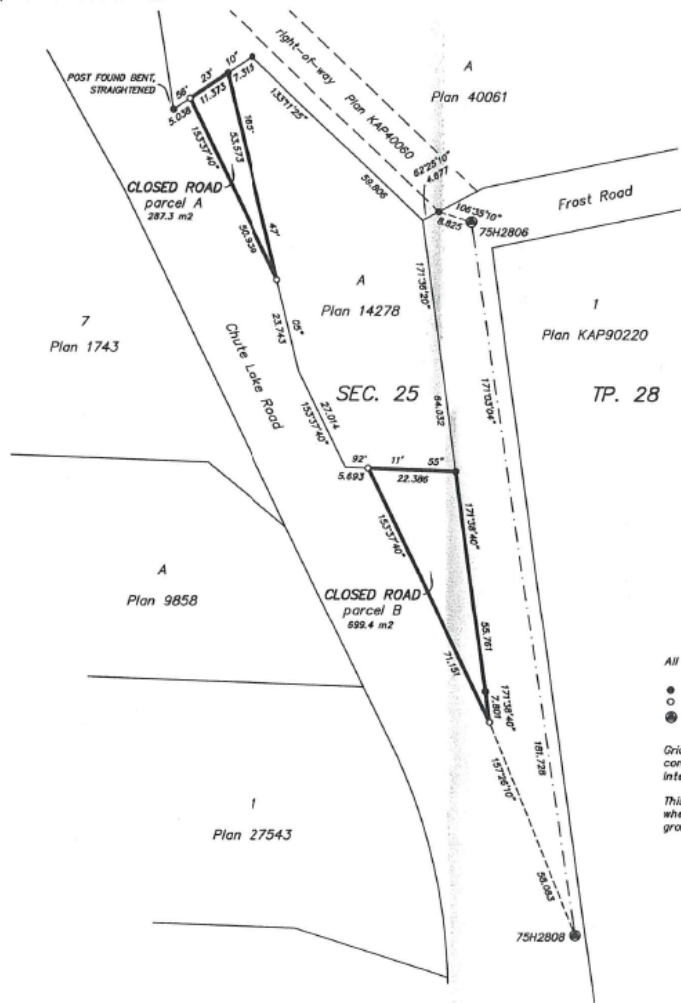
PURSUANT TO SECTION 120 OF THE LAND TITLE ACT AND SECTION 40 OF THE COMMUNITY CHARTER.

Registrar

BCGS 82E.083



The intended size of this plan is 432 mm in width by 560 mm in height (C size) when plotted at a scale of 1:750



**LEGEND**

All distances are in metres.

- Iron Post Found
- Iron Post Set
- ⊙ Control Monument Found

Grid bearings are derived from observations between control monuments 75H2806 and 75H2808. Integrated survey area No. 4 – City of Kelowna NAD83 (CSRS).

This plan shows horizontal ground-level distances except where otherwise noted. To compute grid distances, multiply ground-level distances by combined factor 0.9999321.

This plan lies within the Central Okanagan Regional District.

I, Douglas A. Goddard a British Columbia Land Surveyor, of the City of Kelowna in British Columbia, certify that I was present at and personally superintended the survey represented by this plan, and that the survey and plan are correct. The field survey was completed on the 19th day of April, 2010. The plan was completed and checked and the checklist filed under #109295 on the 22nd day of April, 2010.

*D. A. Goddard*  
B.C.L.S.

file 15319 fb 339 15319 RD CLS

D.A. Goddard Land Surveying Inc.  
103-1358 ST. PAUL STREET KELOWNA PHONE 763-3733  
DUPLICATE